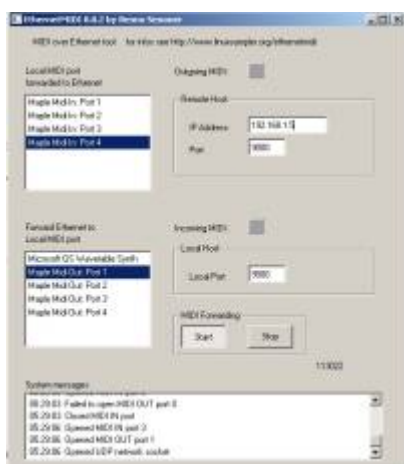


# Program for transmitting a MIDI signal over a local network EthernetMIDI

It is necessary to submit a [MIDI](#) signal to another computer, or station, then this program will help you. The program requires a virtual [MIDI](#) port that can be created with the MIDI-OX program.

## Configuring EthernetMIDI



\* On the machine where the [midi](#) signal is flipped, we press the Start button. Do not forget to select the output port [MIDI](#) of the signal for the throw \* On the remote machine, enter the IP address of the machine from where the [midi](#) signal will be flashed and press Start. Do not forget to select the input port [MIDI](#) to receive the signal.

[Download EthernetMidi 0.0.2](#)

Do not forget to add the program to the exclusion of your firewall.

From:  
<https://dmx-512.ru/> - **DMX-512.RU**

Permanent link:  
[https://dmx-512.ru/en/programmy\\_upravlenija/dmx\\_512](https://dmx-512.ru/en/programmy_upravlenija/dmx_512)

Last update: **2017/06/09 23:05**

